



AQUARIUS ENGINEERS PVT. LTD.

Concrete Pumps, Batching Plants, Boom Pumps



CONCRETE BOOM PUMP - 20.07 Z



► Salient Features:

► Slave Engine Design

- Fuel efficient, reduces per cubic meter cost
- Reduced erection & commissioning time
- Reduced installation expenses
- Enhanced service life of prime mover
- Enhanced power transmission efficiency due to direct drive

► Boom Material

- Boom made of high strength alloy steel gives maximum strength & performance and minimum weight of the structure

► Fully Hydraulic Open Loop Control System

- The pump regulator protects the hydraulic system from overheating & engine from overloading
- The regulator also helps in output regulation & improved fuel efficiency

► Remote Control

- State-of-art handy & lightweight cable remote control
- Unit with all the pump & boom functions in-built
- Wireless control – optional

► Centralised Oil Lubrication System

- For selected points & also easy access, manual grease lubrication system to all points

► Modular Type Boom Control Block

- Occupies less space & is adaptable to proportional boom movement
- Two-hand operation control of outriggers ensures safety in operation

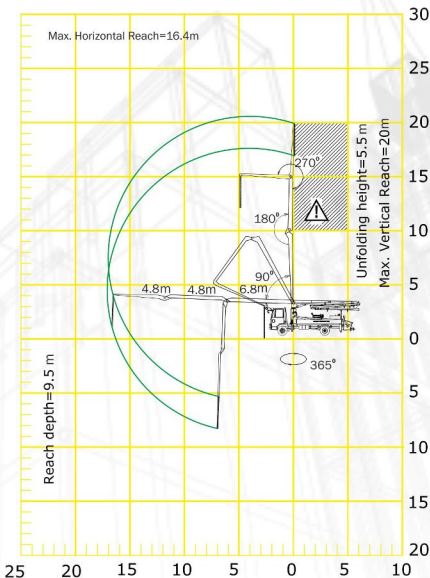
Technical Specifications:

BOOM

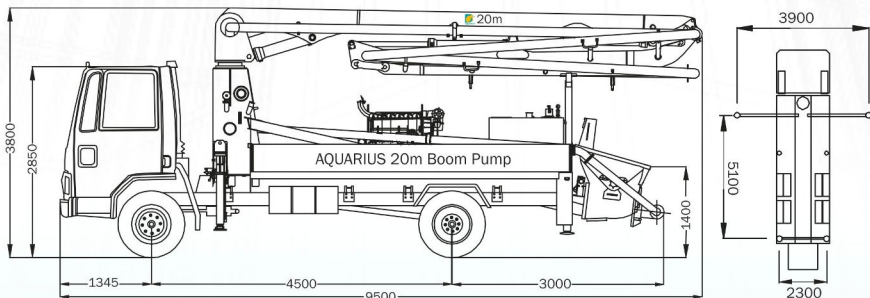
Model Specifications	Unit	20.07
Arms	no.	3
Boom Folding		Z
Chassis Allowable GVW	kg	16000
Horizontal Reach (max.)	m	16.4
Vertical Reach (max.)	m	20
Reach Depth	m	9.5
Max. Support Leg Force: Front	kN	112
Max. Support Leg Force: Rear	kN	44
Unfolding Height	m	5.5
Slewing Range	deg	365
Delivery Line Diameter	mm	125
Length of End Hose (dn 125)	m	3
Max. Hydraulic Pressure	bar	300
Electrical System	V	24
Power Drive Slave Engine	kW	82

CONCRETE PUMP

Model Specifications	Unit	20.07
Concrete Output Max. Theoretical	m ³ /hr	65
Concrete Pressure Max. Theoretical	bar	71
No. of Strokes / Min	no.	25
Delivery Cylinder Diameter	mm	200
Piston Stroke Length	mm	1400
Hydraulic Transmission Ratio (rod Side)		1.4:9
Easy Clean Hopper Capacity	l	600
Water Tank Capacity	l	500



⚠ Range in which you must not work with the end hose.



NOTE: All Dimension are in mm, unless specified otherwise

Performance of equipment is based on standard working conditions. Design / Specifications can be changed without prior notice.



AQUARIUS ENGINEERS PVT. LTD.
Concrete Pumps, Batching Plants, Boom Pumps

'Aquarius House', Sheelavihar Colony, Off Karve Road,
Pune 411 038. INDIA Tel.: +91 20 2544 5227 Fax: +91 20 2544 5228
E-mail: enquiries@aquariusengineers.biz
Web: www.aquariusengineers.biz

Mfg. by: Putzmeister India Pvt. Ltd.
190, 191, Kundaim Industrial Estate, Kundaim, Goa 403 115. India

Local Contact: